



T1A2240105S-42EE

SPECIFICATIONS



- Dimmable Constant current 2-Channel LED driver with DALI DT8
- Support DALI dimming and tunable white function
- Support PUSH dimming and tunable white function
- Dimming range 1 to 100%
- Tunable White
- Output Wattage : 42W Max
- Output voltage range of 12-42Vdc
- Output Current: 600 - 1050mA
- Flicker-free at any brightness, meeting the standard of flicker-free(IEEE 1789-2015)
- Application
 - LED indoor lighting
 - LED office lighting
 - LED architectural lighting
 - LED panel lamp lighting

General Specifications

Rated Input Voltage	200-240Vac,50/60Hz
Operating Input Voltage Range	180-264Vac,50/60Hz
Input Current	<0.3 @ 230Vac
Input Power	47.5W
Power Factor	>0.95 @ 230Vac/Full Load, >90 @ 230Vac/>50% Load
THD	<10% @ 230Vac/Full Load, THD <20% @ 230Vac/>50% Load
Efficiency (Typical)	89%
Driver Type	Constant Current DALI 2.0
Output Current	1050mA ±3%, 1000mA ±3%, 950mA ±3%, 900mA ±3%, 850mA ±3%, 800mA ±3% 750mA ±3%, 700mA ±3%, 650mA ±3%, 600mA ±3% *Refer DIP switch Table for O/P current selection
Output Voltage Range	12-42Vdc (12-40Vdc @ 1050mA)
Output Power	42W
Number of Output Channels	2 Channel
Output Type	Class II
Dimming Controller Type	DALI 2.0
Ambient Operating Temperature Range	-20°C to 60°C
Max. Case Temperature	90°C
Input Surge Protection	2KV
Protections	Input Over Current : Non Resettable (Fuse) Output Short Circuit : Auto Recovery (HICCUP Mode) Output Open Circuit : Auto Recovery (HICCUP Mode) Output Overload : YES Over Temperature : Auto Recovery (HICCUP Mode)
Safety Standards	EN61347-1/2-13, GB19510.1/14, EN62384
Flicker-free standard	IEEE1789
Withstand Voltage	I/P-O/P:3750Vac, I/P-FG:1750Vac, O/P-FG:500Vac, I/P DALI:500Vac
Leakage Current	<0.7mA @ 240Vac
Isolation resistance	I/P-O/P:100MΩ / 500Vdc / 25°C / 70% RH
Life	50,000 Hours
Approvals / Class	SELV Equivalent
Warranty	3 Years
Weight	0.250 Kg

Note : Suitable for Indoor application only

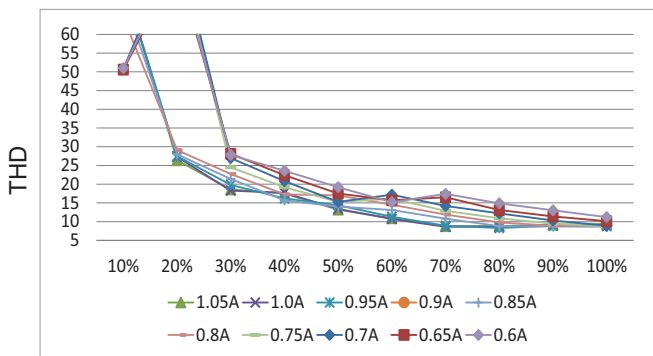
Fulham extends a limited warranty only to the original purchaser or to the first user for a period of **03 years @ Tc 90°C** from the date of manufacture when properly installed and operated under normal conditions of use. For complete terms and conditions, please reference the Fulham Product Catalog (www.fulham.com). Due to a program of continuous improvement, Fulham reserves the right to make modifications or variations in design or construction to the equipment described. © Fulham Company Limited, All Rights Reserved.

DIP Switch Chart :

Remark: ★ this current is factory default.
 - this Switch is off.

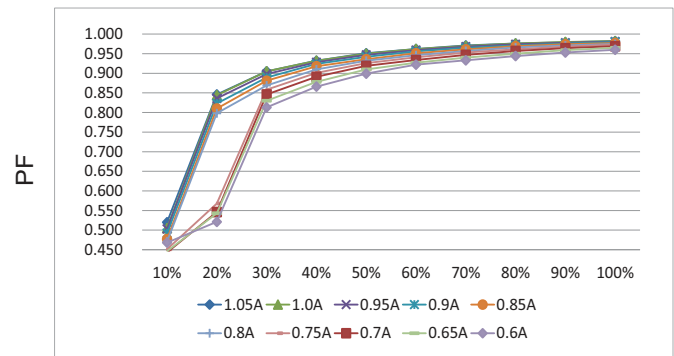
PIN	Irated	Output Voltage	1	2	3	4
29.0W	600mA	42VDC	-	ON	ON	ON
31.0W	650mA	42VDC	ON	-	ON	ON
33.5W	700mA	42VDC	-	-	ON	ON
36.0W	750mA	42VDC	-	ON	-	ON
38.0W	800mA	42VDC	-	-	-	ON
40.5W	850mA	42VDC	ON	ON	ON	-
43.0W	900mA	42VDC	-	-	ON	-
45.0W	950mA	42VDC	-	ON	-	-
47.5W	1000mA	42VDC	ON	-	-	-
47.5W	1050mA ★	40VDC	-	-	-	-

THD vs. Load



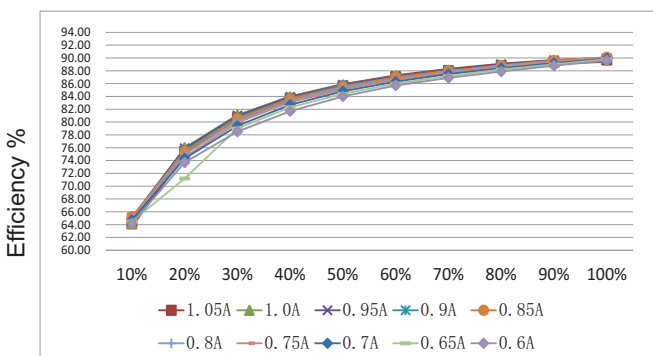
Load

Power factor vs. Load



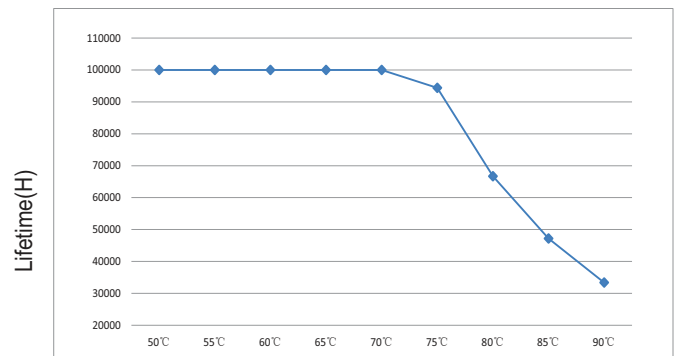
Load

Efficiency vs. Load



Load

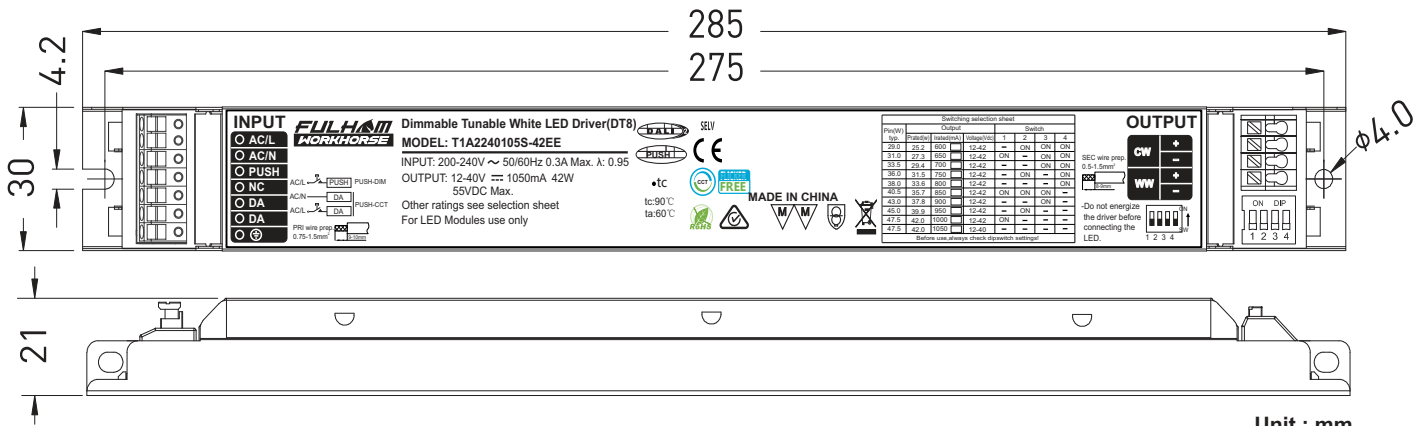
Lifetime vs. case temperature



case temperature(Tc)

Fulham extends a limited warranty only to the original purchaser or to the first user for a period of **03 years @ Tc 90°C** from the date of manufacture when properly installed and operated under normal conditions of use. For complete terms and conditions, please reference the Fulham Product Catalog (www.fulham.com). Due to a program of continuous improvement, Fulham reserves the right to make modifications or variations in design or construction to the equipment described. © Fulham Company Limited, All Rights Reserved.

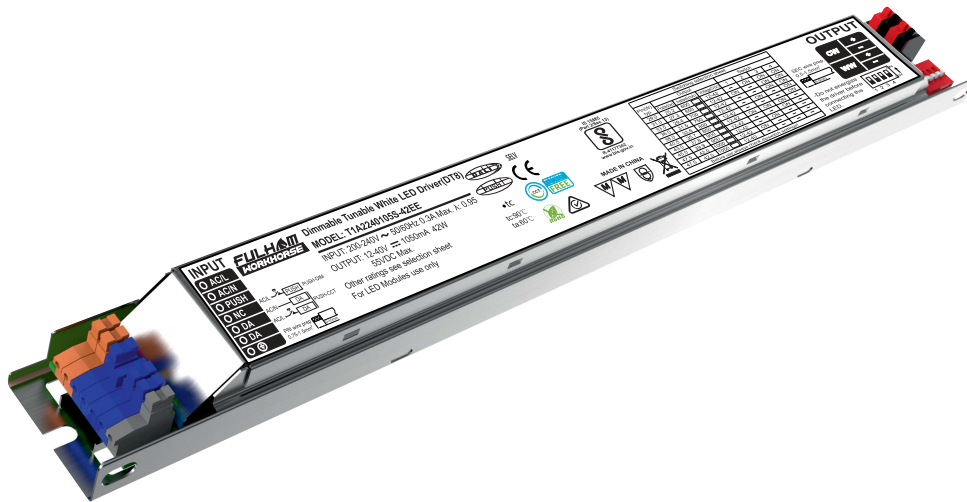
Mechanical Data :



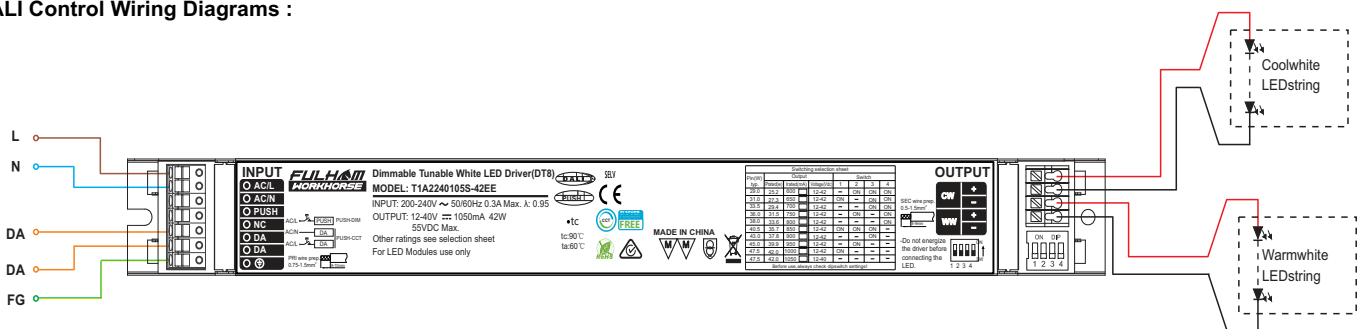
Note : All Dimensions are in mm.

**Unit : mm
Tolerance=±0.5mm**

Product Image :



DALI Control Wiring Diagrams :



Installation Instructions:

Connect Wires as per details given on the Driver Screen. Keep proper ventilation around the LED Driver and do not stack any object on it. Also a 10-15 cm clearance must be kept when the adjacent device is a heat source. Do not exceed the declared Hot spot temperature(Tc max) under any circumstances.

Fulham extends a limited warranty only to the original purchaser or to the first user for a period of **03 years @ Tc 90°C** from the date of manufacture when properly installed and operated under normal conditions of use. For complete terms and conditions, please reference the Fulham Product Catalog (www.fulham.com). Due to a program of continuous improvement, Fulham reserves the right to make modifications or variations in design or construction to the equipment described. © Fulham Company Limited, All Rights Reserved.